

Carson Trail

Rachel Carson National Wildlife Refuge

wellsreserve at laudholm

Welcome to the Wells Reserve at Laudholm

Laudholm Campus



The Webhannet Marsh Trail crosses land that was salt marsh before being filled with material dredged from Wells Harbor.

To support the Wells Reserve, join Laudholm Trust.

wellsreserve.org/join

The 2,250-acre Wells National Estuarine Research Reserve is one of 29 sites established across the country for long-term research, education, and conservation. The reserve's Laudholm campus is listed on the National Register of Historic Places.

Site Rules

- Smoke-free facility
- No dogs or other pets
- Stay on established trails
- No collecting
- Find complete Rules for Public Use on our website. Carson and Webhannet Marsh trail rules differ; obey posted rules.

Enjoy your visit.

Trails are open every day from 7am to sunset.

We encourage the reuse of trail maps. You may return this map to the Information Kiosk as you leave.



The Yankee Woodlot is managed for long-term environmental and economic value.

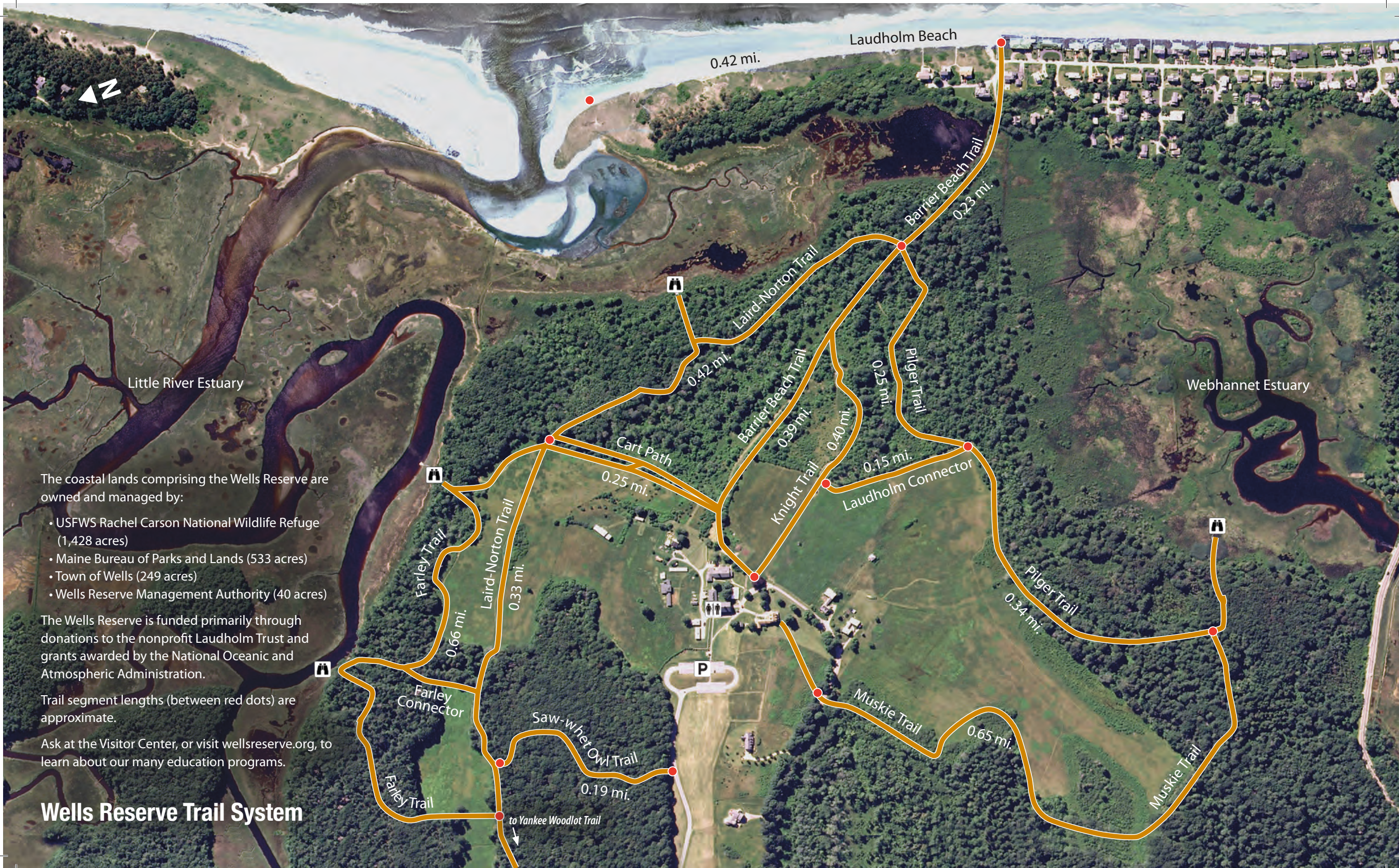
Webhannet Marsh Trail

Town of Wells

wellsreserve
342 Laudholm Farm Road, Wells ME 04090
wellsreserve.org
207-646-1555

wellsreserve.org/trails

Yankee Woodlot Trail



The coastal lands comprising the Wells Reserve are owned and managed by:

- USFWS Rachel Carson National Wildlife Refuge (1,428 acres)
- Maine Bureau of Parks and Lands (533 acres)
- Town of Wells (249 acres)
- Wells Reserve Management Authority (40 acres)

The Wells Reserve is funded primarily through donations to the nonprofit Laudholm Trust and grants awarded by the National Oceanic and Atmospheric Administration.

Trail segment lengths (between red dots) are approximate.

Ask at the Visitor Center, or visit wellsreserve.org, to learn about our many education programs.

Wells Reserve Trail System

Laudholm Beach

0.42 mi.

Barrier Beach Trail
0.23 mi.

Laird-Norton Trail
0.42 mi.

Barrier Beach Trail
0.39 mi.

Pilger Trail
0.25 mi.

Cart Path
0.25 mi.

Knight Trail
0.40 mi.

Laudholm Connector
0.15 mi.

Pilger Trail
0.34 mi.

Farley Trail
0.66 mi.

Laird-Norton Trail
0.33 mi.

Farley Connector

Saw-whet Owl Trail
0.19 mi.

Farley Trail

to Yankee Woodlot Trail

Muskie Trail
0.65 mi.

Muskie Trail

Little River Estuary

Webhannet Estuary

